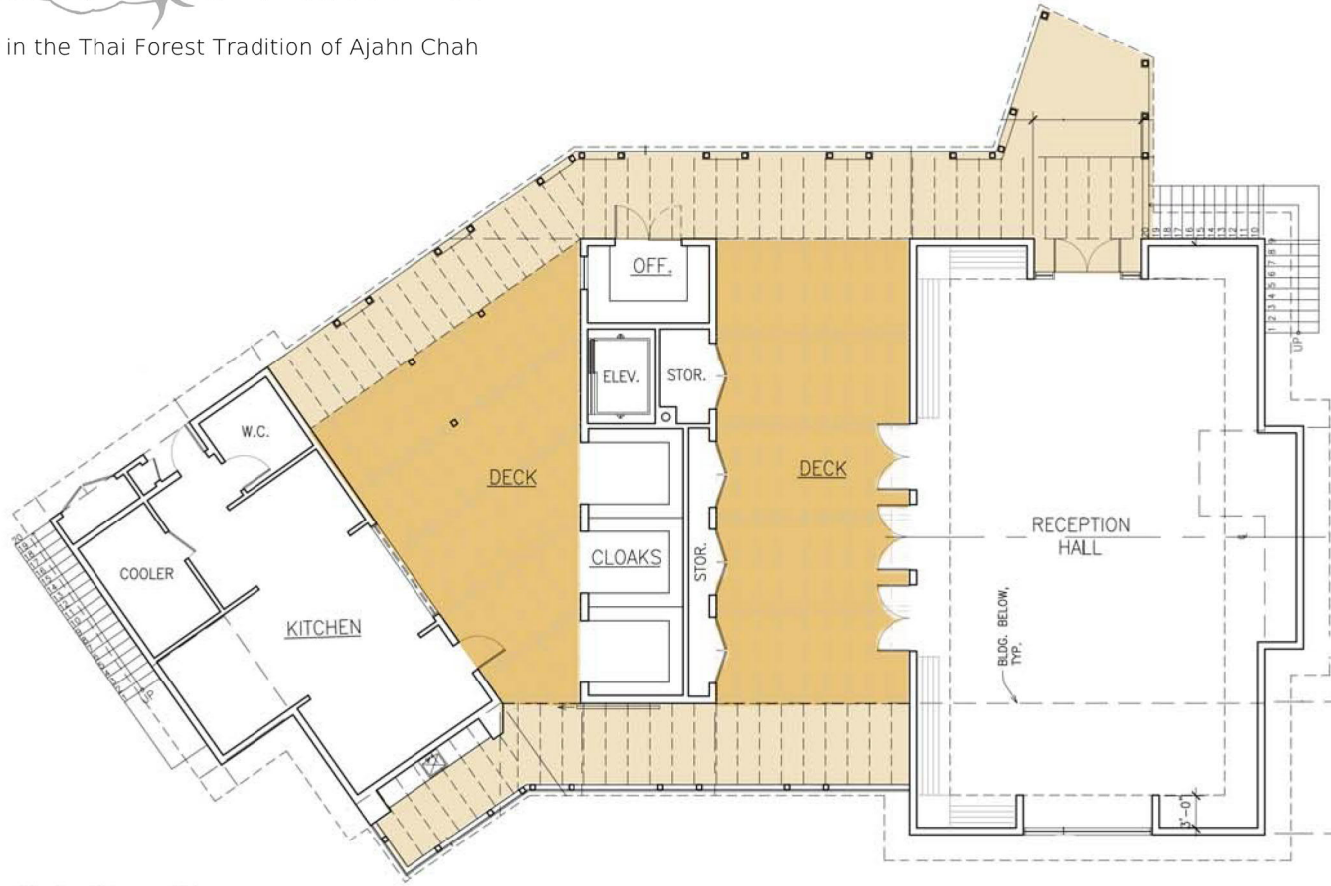
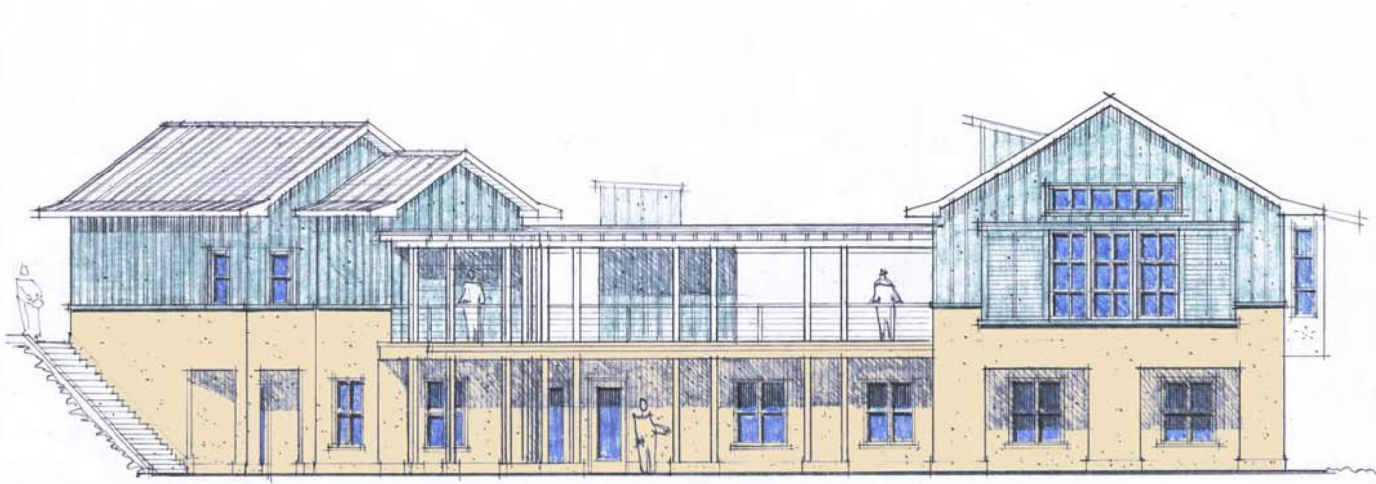


# ABHAYAGIRI

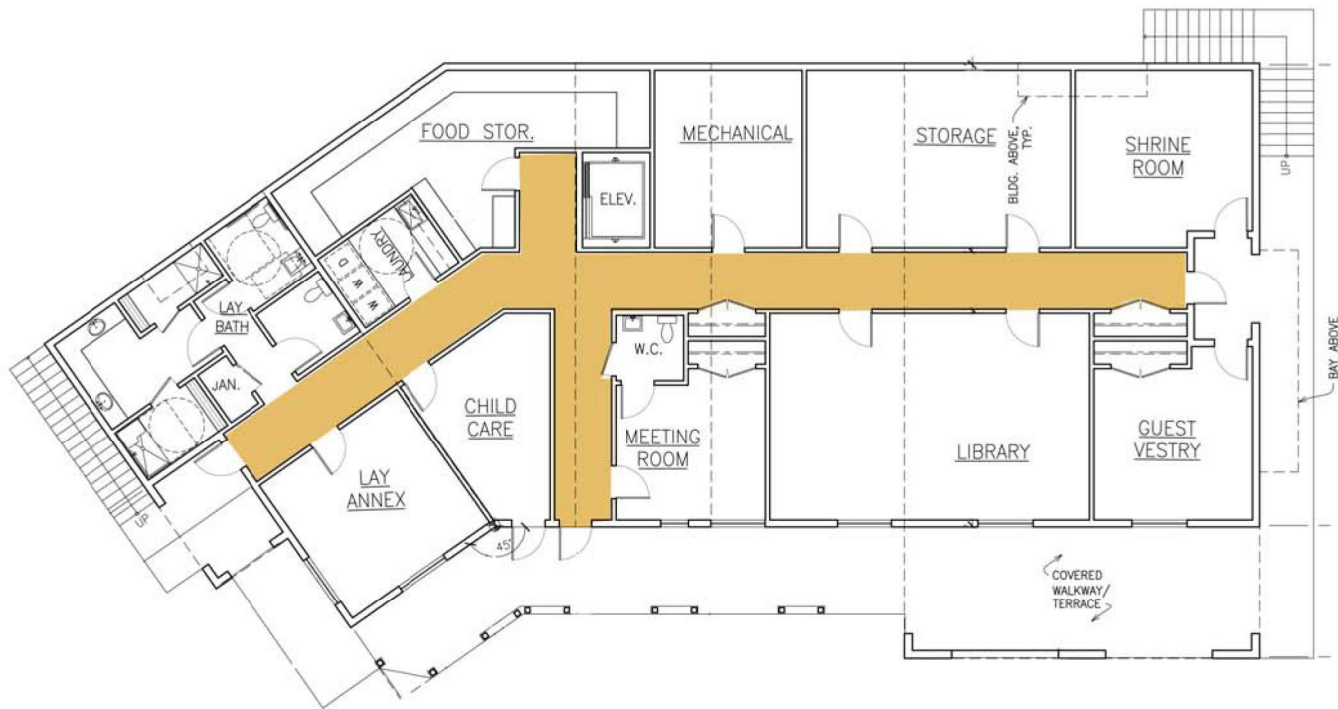
A Buddhist Monastery in the Thai Forest Tradition of Ajahn Chah



Main Floor Plan

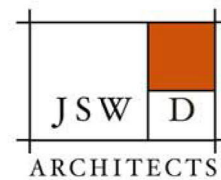


West Elevation



Lower Floor Plan

## New Reception Hall Building Abhayagiri Buddhist Monastery





# ABHAYAGIRI

A Buddhist Monastery in the Thai Forest Tradition of Ajahn Chah

## New Reception Hall Room Dimensions

	Meters	Square Meters	Square Feet
<u>Main Floor:</u>			
Reception Hall:	9.7m x 16.5m	160 sq/m	1,730 sq/ft
Kitchen:	5.5m x 11.2m	62.0 sq/m	700 sq/ft
Office:	3.0m x 4.5m	13.5 sq/m	150 sq/ft
Storage Closets:		18.0 sq/m	200 sq/ft
Coat Storage:	4.5m x 6.0m	27.0 sq/m	300 sq/ft
Covered Decks:		150 sq/m	1,600 sq/ft
<u>Lower Floor:</u>			
Library:	5.5m x 9.0m	50.0 sq/m	575 sq/ft
Meeting Room:	4.2m x 5.5m	23.3 sq/m	250 sq/ft
Guest Room:	4.2m x 4.2m	18.0 sq/m	200 sq/ft
Child Care:	3.0m x 5.5m	16.5 sq/m	180 sq/ft
Laymen's Bath:	5.0m x 5.5m	27.5 sq/m	300 sq/ft
Laundry:	2.5m x 3.6m	9.0 sq/m	100 sq/ft
Storage:	5.0m x 7.0m	35.0 sq/m	380 sq/ft
Kitchen Storage:	3.5m x 7.0m	24.5 sq/m	400 sq/ft
Lay Annex:	4.5m x 4.5m	20.0 sq/m	225 sq/ft
Mechanical Room:	4.0m x 5.0m	20.0 sq/m	225 sq/ft
Shrine Room:	4.5m x 4.5m	20.0 sq/m	225 sq/ft
<b>Total</b>		<b>691.3 sq/m</b>	<b>7,740 sq/ft</b>